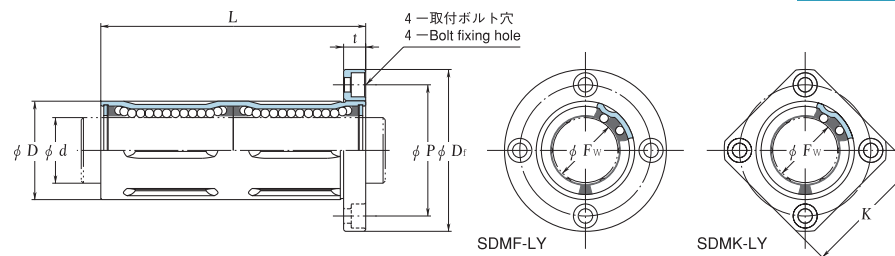
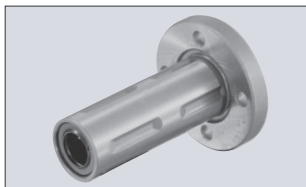


**SDMF-LY Series**  
**SDMK-LY Series**

ナイロン保持器付き  
With resin retainer



| 軸径<br>Shaft<br>diameter<br>d<br>mm | 呼び番号 Part No.               |             |                              |             | ボール<br>条 列<br>Ball<br>track | 内接円径<br>Inscribed circle diameter |                        | 外 径<br>Outside diameter |                        | 全 長<br>Length |                        | フ ラ ン ジ<br>Flange                                 |                                   |                            |                |                      | 偏心<br>Eccentricity<br>(最大)<br>(Max)<br>μm | 基本定格荷重<br>Basic load rating |                | (参考値)<br>質量<br>(標準形)<br>Weight<br>(Standard)<br>(g) | 軸径<br>Shaft<br>diameter<br>d<br>mm |
|------------------------------------|-----------------------------|-------------|------------------------------|-------------|-----------------------------|-----------------------------------|------------------------|-------------------------|------------------------|---------------|------------------------|---|-----------------------------------|----------------------------|----------------|----------------------|---|-----------------------------|----------------|---|------------------------------------|
|                                    | 丸フランジタイプ Round flanged type |             | 角フランジタイプ Square flanged type |             |                             | F <sub>w</sub><br>mm              | 許容差<br>Tolerance<br>μm | D<br>mm                 | 許容差<br>Tolerance<br>μm | L<br>mm       | 許容差<br>Tolerance<br>μm | D <sub>f</sub><br>外径<br>Outside<br>diameter<br>mm | K<br>2面間<br>Square<br>width<br>mm | t<br>厚さ<br>Thickness<br>mm | P<br>PCD<br>mm | 取付ボルト<br>Fixing bolt |   | C                           | C <sub>0</sub> |   |                                    |
|                                    | オープン Without seal           | UU          | オープン Without seal            | UU          |                             |                                   |                        |                         |                        |               |                        |   |                                   |                            |                |                      |   |                             |                |   |                                    |
| 6                                  | SDMF6LY                     | SDMF6LY UU  | SDMK6LY                      | SDMK6LY UU  | 4                           | 6                                 | 12                     | 0                       | 35                     | 0             | 28                     | 22  | 5                                 | 20                         | M3             | 172                  | 373                                       | 28                          | 6              |   |                                    |
| 8                                  | SDMF8LY                     | SDMF8LY UU  | SDMK8LY                      | SDMK8LY UU  | 4                           | 8                                 | 15                     | -13                     | 45                     | 0             | 32                     | 25  | 5                                 | 24                         | M3             | 212                  | 511                                       | 45                          | 8              |   |                                    |
| 10                                 | SDMF10LY                    | SDMF10LY UU | SDMK10LY                     | SDMK10LY UU | 4                           | 10                                | 19                     | 0                       | 55                     | 0             | 40                     | 30  | 6                                 | 29                         | M4             | 411                  | 848                                       | 81                          | 10             |   |                                    |
| 12                                 | SDMF12LY                    | SDMF12LY UU | SDMK12LY                     | SDMK12LY UU | 4                           | 12                                | 21                     | 0                       | 57                     | -300          | 42                     | 32  | 6                                 | 32                         | M4             | 412                  | 862                                       | 92                          | 12             |   |                                    |
| 13                                 | SDMF13LY                    | SDMF13LY UU | SDMK13LY                     | SDMK13LY UU | 4                           | 13                                | 23                     | -16                     | 61                     | 0             | 43                     | 34  | 6                                 | 33                         | M4             | 459                  | 1010                                      | 110                         | 13             |   |                                    |
| 16                                 | SDMF16LY                    | SDMF16LY UU | SDMK16LY                     | SDMK16LY UU | 4                           | 16                                | 28                     | 0                       | 70                     | 0             | 48                     | 37  | 6                                 | 38                         | M4             | 762                  | 1530                                      | 160                         | 16             |   |                                    |
| 20                                 | SDMF20LY                    | SDMF20LY UU | SDMK20LY                     | SDMK20LY UU | 5                           | 20                                | 32                     | 0                       | 80                     | 0             | 54                     | 42  | 8                                 | 43                         | M5             | 936                  | 2020                                      | 230                         | 20             |   |                                    |
| 25                                 | SDMF25LY                    | SDMF25LY UU | SDMK25LY                     | SDMK25LY UU | 5                           | 25                                | 40                     | -19                     | 112                    | 0             | 62                     | 50  | 8                                 | 51                         | M5             | 1790                 | 4050                                      | 410                         | 25             |   |                                    |
| 30                                 | SDMF30LY                    | SDMF30LY UU | SDMK30LY                     | SDMK30LY UU | 6                           | 30                                | 45                     | 0                       | 123                    | 0             | 74                     | 58  | 10                                | 60                         | M6             | 2340                 | 5540                                      | 600                         | 30             |   |                                    |
| 35                                 | SDMF35LY                    | SDMF35LY UU | SDMK35LY                     | SDMK35LY UU | 6                           | 35                                | 52                     | 0                       | 135                    | -400          | 82                     | 64  | 10                                | 67                         | M6             | 2500                 | 6150                                      | 860                         | 35             |   |                                    |
| 40                                 | SDMF40LY                    | SDMF40LY UU | SDMK40LY                     | SDMK40LY UU | 6                           | 40                                | 60                     | -22                     | 154                    | 0             | 96                     | 75  | 13                                | 78                         | M8             | 3460                 | 8030                                      | 1400                        | 40             |   |                                    |

備考 SDMF10LY, SDMF16LY, SDMF30LYは、モデルチェンジしたフランジを採用致しておりますのでご注意ください。

Remark: Note that the flange is modified for SDMF10LY, SDMF16LY and SDMF30LY.