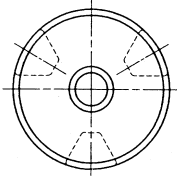
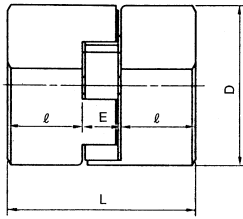


FLEXIBLE COUPLINGS

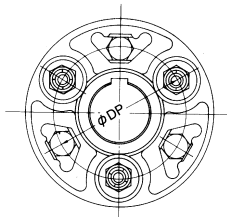
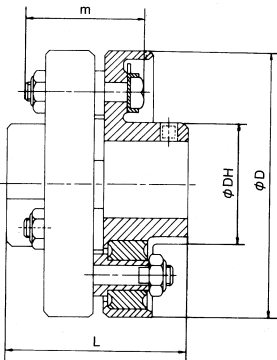
JAW-FLEX COUPLING (Jaw Type Elastomeric Coupling)



Dimensions and ratings

(Dimensions in mm)

Size	Torque Capacity (N-m)	Max. Speed (r.p.m.)	Rough Bore	Max. Bore	L	ℓ	E	D	Weight (kgf)	WR ² (kgf·m ²)
L035-S	0.4	31,000	—	9.5	20.8	6.7	7.4	15.9	0.015	0.025
L050-S	2.9	18,000	—	16.0	44.5	15.9	12.7	27.4	0.10	0.49
L050-H	5.9									
L070-S	4.9	14,000	6.4	20.0	51.2	19.0	13.2	34.5	0.20	1.58
L070-M	7.8			19.0						
L070-H	12.7									
L075-S	11.8									
L075-M	14.7	11,000	8.0	26.0	54.4	20.6	13.2	44.5	0.36	4.57
L075-H	25.5									
L090-S	16.7									
L090-M	24.5	9,000	11.1	29.0	54.4	20.6	13.2	53.6	0.54	9.8
L090-H	44.1									
L095-S	23.5									
L095-M	32.3	9,000	11.1	29.0	64.0	25.4	13.2	53.6	0.64	11.8
L095-H	63.7									
L099-S	35.3									
L099-M	53.9	7,000	12.7	35.0	72.8	27.0	18.8	64.3	1.1	27.8
L099-H	89.2									
L100-S	49.0	7,000	15.0	37.0	88.8	34.9	19.0	64.3	1.2	33.4
L100-M	70.6			35.0						
L100-H	128									
L110-S	110	5,000	18.0	48.0	108.4	42.9	22.6	84.1	2.8	124
L110-M	133			47.0						
L110-H	256									
L150-S	157									
L150-M	214	5,000	22.0	49.0	114.6	44.4	25.8	95.2	3.7	212
L150-H	363									
L190-S	192									
L190-M	288	5,000	19.1	58.0	134.1	54.0	26.1	114.3	5.8	430
L190-H	529									
L225-S	264									
L225-M	395	4,200	19.1	69.0	153.1	63.5	26.1	127.0	8.0	726
L225-H	711			63.0						



Dimensions and ratings

(Dimensions in mm)

Model	Max. Bore	Torque Capacity (N-m)	Shaft Dia.		WR ² (×10 ⁻² kgf·m ²)	D	DH	DP	L	Bolts		Apprx. Weight (kgf)
			Min. Bore	Max. Bore						Size×Pcs.	m	
NF303	20	43.1	13	20	4.87	80	37	55	63	M 6×6	40	1.0
NF403	30	71.5	16	30	23.44	111	50	75	80	M 8×6	50.5	2.4
NF503	42	118	19	42	56.72	133	65	92	98	M10×6	63	4.0
NF603	50	235	22	50	155.74	161	75	110	110	M12×6	71	7.0
NF703	55	382	25	55	292.40	182	85	123	131	M14×6	84	10.5
NF804	65	529	28	65	402.81	210	100	150	149	M14×8	84	15
NF904	75	715	31	75	718.34	230	110	160	179	M16×8	97	30
NF1004	90	980	34	90	1,600.60	296	145	205	208	M18×8	108	51

FEATURES

JAW-FLEX COUPLING

- Simple design
- Choice of 3 insertion types
- Economical
- Compact & light

NEO-FLEX COUPLING

- Absorption of vibration or shock load
- High durability
- Simple

APPLICATIONS

JAW-FLEX COUPLING

- Pumps
- Reducer input shafts
- Automatic doors

NEO-FLEX COUPLING

- Extruders
- Crushers
- Agitators
- Conveyors